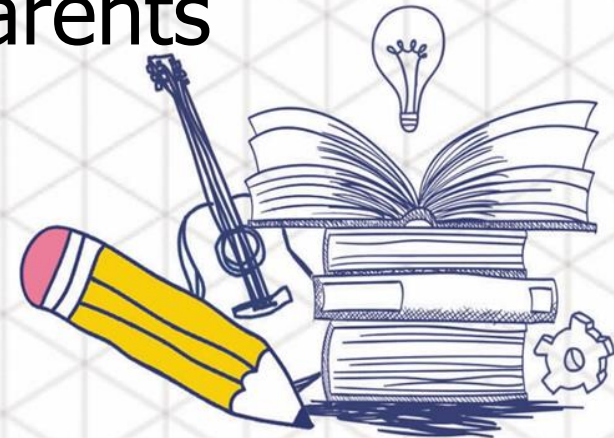




Eligibility to Take Subject(s) at a More Demanding Level under Full Subject-Based Banding (FSBB)

Information for Sec 1 Parents



What is Full Subject-Based Banding?

- Full Subject-Based Banding (Full SBB) is part of MOE's ongoing efforts to **nurture the joy of learning** and **develop multiple pathways** to cater to the different strengths and interests of our students.
- With Full SBB, we are moving towards a secondary school education where **students learn each subject at the level that best caters to their overall strengths, interests and learning needs.**



Champions of Today
Leaders of Tomorrow

What are the possible benefits of taking subjects at More Demanding Level (MDL)?

- Allows students to challenge themselves and experience joy of learning in a subject they have interest in.
- A strong foundation in literacy, numeracy and reasoning, would ensure students are better prepared for various post-secondary progression pathways (e.g. to ITE and Polytechnic).



Subject Levels under Full SBB

- Students can offer different subjects at different subject levels (i.e., G1, G2 or G3) according to their strengths, interests and learning needs, throughout their secondary school journey.
- These subject levels, G1, G2 or G3, are mapped from the standards of N(T), N(A) and Express subject levels respectively.



Subject Levels under Full SBB

- Students are required to take compulsory subjects at G1, G2 or G3.
- Subject level at the start of Secondary 1 is based on their PSLE Score and indicated by Posting Groups.

PSLE Score	Posting Groups	Indicative level for most subjects at start of Secondary 1
4 – 20	PG3	G3
21 - 22	PG2 or PG3	G2 or G3
23 - 24	PG2	G2
25	PG1 or PG2	G1 or G2
26 – 30 (with AL 7 or better in EL and MA)	PG1	G1



Offering Subjects at More Demanding Levels

- For **English Language, Mother Tongue Languages, Mathematics and/or Science**, students can offer them at the start of Secondary 1 at a more demanding level if they meet the eligibility criteria.

Eligibility criteria for <u>English Language, Mathematics, Science, Mother Tongue Languages</u>			
Posting Group	PSLE Standard grade	PSLE Foundation grade	Option to offer subject at
PG2	AL 5 or better	-	G3
PG1	AL 5 or better	-	G2 / G3
	AL 6	AL A	G2



Champions of Today
Leaders of Tomorrow

Offering Subjects at More Demanding Levels

- Students can offer **Humanities subjects** at a more demanding level from Secondary 2 onwards, based on their results in Secondary 1.
 - (i) Students who offered G1 Humanities in Sec 1 can offer G2 Humanities in Geography, History and/or Literature in English in Sec 2 if they obtained:
 - $\geq 75\%$ overall in G1 English Language (or $\geq 50\%$ overall in G2 English Language); **AND**
 - A Pass with Distinction grade for both Performance Tasks in Semesters 1 and 2 from the G1 Humanities Social Studies component.



Champions of Today
Leaders of Tomorrow

Offering Subjects at More Demanding Levels

- (ii) Students who offered G2 Humanities in Sec 1 can offer G3 Geography, History and/or Literature in English in Sec 2 if they obtained $\geq 75\%$ overall in G2 History, Geography or Literature in English.



Champions of Today
Leaders of Tomorrow

Subject Level Flexibility Throughout Secondary Education

- The school also offers students subjects at MDL at two other junctures:
 - End of Semester 1 (EL, MTL, MA, SCI);
 - End of Semester 2 (EL, MTL, MA, SCI, HUM).
- Eligibility criteria to offer subjects at MDL are as follows:

Current subject level	School-based results	Option to offer subject at
G1	≥75% in the specific subject	G2 starting from next semester
G2	≥75% in the specific subject	G3 starting from next semester



Subject Level Flexibility Throughout Secondary Education

- If students are unable to cope with the current subject level they are offering, they have the flexibility to initiate request to offer the subject(s) at a less demanding level beyond Sec 1.
- By the end of Sec 2, students who can cope with the subject(s) at MDL, can continue to offer the subject(s) at the current subject level in upper secondary.
- Students who did not offer EL, MTL, MA and/or SCI at MDL in lower secondary could start to offer the subject(s) at MDL **from the start of Sec 3** if they are deemed able to cope with the subject at MDL.



Support for your child

- Students who are eligible to take subjects at MDL, do require time to adjust and adapt to the higher academic demands and foster friendships with their peers from different classes.
- Our school will monitor students' progress in the subjects taken at more demanding levels, overall progress in all subjects and their socio-emotional and academic needs to provide the necessary support.



For more information

You can contact Ms Chan Foong Keng, FSBB
Coordinator:

chan.foongkeng@cwss.moe.edu.sg



Champions of Today
Leaders of Tomorrow

Thank you



**Champions of Today
Leaders of Tomorrow**